

For more information, Interview requests or press passes, please contact:
Leigh Allan
773-244-8119
lallan@remybumpo.org

Remy Bumpo Presents the U.S. Premiere of
Jane Austen's
Northanger Abbey
Adapted by Tim Luscombe



In an age when sparkly vampires and hairy heartthrobs are not far from the minds of most teenagers, Jane Austen's *Northanger Abbey* comes as a knowing nod and a humorous twist to the romantic gothic fantasy.

Remy Bumpo will be kicking off its 17th season with the U.S. Premiere of Tim Luscombe's new adaptation, which *British Theatre Guide* says "preserves all the wit and charm of the original."

"I've never gotten to do anything like it," says director Joanie Schultz (*The Whale*). Not an early Austenite, Schultz says it has been "amazing, even life-changing to discover Jane Austen. Her books are so witty, her attitudes so feminist for the society in which she lived."

"*Northanger* struck me as incredibly theatrical," says Luscombe. He says the most difficult problem when adapting Austen's works is that the novels rely so much on revelations of what a character, especially the heroine, is thinking. In the case of *Northanger*, heroine Catherine's thoughts tend to be vivid images inspired by *The Mysteries of Udolpho*, one of the Gothic novels she loves to read. This allowed creation of scenes full of color and action, even while dealing with introspection.

Schultz calls heroine Catherine a typical teenager, who today would be as much influenced by current forms of popular culture as she is by books. "She shows this hope we have that love can persevere, make us better and change our lives," says Schultz, who praises Luscombe's adaptation as outstanding. "He has been most true to Jane Austen, while making the play dramatic and stageworthy."

Catherine Morland (Sarah Price), a 17-year old voracious reader, embarks on her first real adventure on a holiday to Bath, supervised by the colorful Mrs. Allen (Artistic Associate Annabel Armour). At one of the many enchanting balls they attend, she meets charming but mysterious Henry Tilney (Artistic Associate Greg Matthew Anderson), who whisks her off her feet and onward, to the menacing and thrilling Northanger Abbey, under the sinister eye of his father General Tilney (John Lister). There, to the delight of the audience, Catherine's gothic fantasies come all-too-much to life.

Jane Austen's *Northanger Abbey* will be performed October 2 through November 10 at the Greenhouse Theater Center at 2257 N. Lincoln in Chicago. Single tickets and season subscriptions are on sale now at www.remybumpo.org or by calling the Greenhouse at 773-404-7336.

Tess Golden is Stage Manager for *Northanger Abbey*. The set is by Jacqueline and Richard Penrod, costumes by Rachel Lambert, lights by Heather Gilbert, sound design by Thomas Dixon, and properties by Jesse Gaffney.

Northanger Abbey is partially underwritten by the Jane Ellen Murray Foundation, Bruce and Mary Feay, Karen Randolph and Bill Linden, and The Barbara and Barre Sied Foundation. Remy Bumpo 2013/2014 Season Sponsors are Brenda and James Grusecki.

Special Events:

All at the Greenhouse Theater Center, 2257 N. Lincoln Ave., Chicago

Monday, October 7, 7:00 pm - *Northanger Abbey* - Opening Night

Sunday, October 20, 1:30 pm - *Between the Lines* preshow conversation starts at 1:30 pm. The performance starts at 2:30 pm.

Listing Information:

Jane Austen's
Northanger Abbey
Adapted by Tim Luscombe
Directed by Joanie Schultz
October 2 - November 10, 2013
Greenhouse Theater Center, Upstairs Mainstage
2257 N. Lincoln Ave
Chicago, IL 60614

Performance Times:

Opening Night: Monday, October 7 at 7:00 pm

Previews (Oct. 2 - Oct. 6): Wednesdays through Saturdays at 7:30 pm, Sundays at 2:30 pm

Regular Run: Thursdays through Saturdays at 7:30 pm, Sundays at 2:30 pm

Wednesdays, October 16 and November 6 at 7:30 pm

Matinee performances (other than Sundays): Thursday, October 24 and Saturday, November 2 at 2:30 pm.

Cast:

Artistic Associate Greg Matthew Anderson
Artistic Associate Annabel Armour
Robert Hope
Carl Lindberg
John Lister
Darci Nalepa
Sarah Price
Meg Warner

Production Team:

Directed by Joanie Schultz
Scenic Design by Jacqueline and Richard Penrod
Costumes by Rachel Lambert
Sound by Thomas Dixon
Lighting by Heather Gilbert
Properties by Jessie Gaffney
Stage Management by Tess Golden

Tickets:

Greenhouse Box Office, 773-404-7336 (open at noon Wed.-Sun.)
Or online at www.remybumpo.org

Previews: \$32.50-\$37.50

Opening Night: \$57.50

Regular Run: Wed-Fri \$37.50-\$47.50, Sat-Sun \$42.50-\$52.50

Between the Lines: \$57.50

Student Tickets: \$15 all performances except Opening Nights and Between the Lines

Group Discounts: Available for parties of 10 or more, call 773-244-8119 x302

Parking:

The former Children's Memorial Hospital garage, 1/2 block north of the theater on Lincoln Avenue, is making 100 parking spaces available free to the public for up to five hours, on a first-come, first-served basis. The offer is subject to change at any time.

For further information about *Northanger Abbey*, Remy Bumpo and related matters, visit www.remybumpo.org or call 773-244-8119.

Cast:



Greg Matthew
Anderson
as Henry



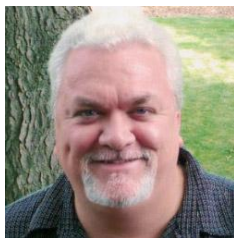
Annabel Armour
as Mrs. Allen



Robert Hope
as John



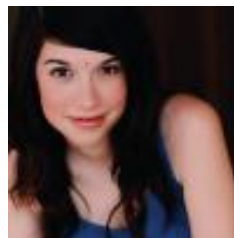
Carl Lindberg
as James/Frederick



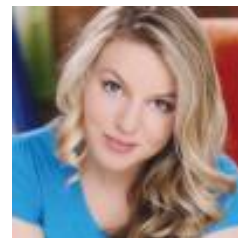
John Lister
as General Tilney



Darci Nalepa
as Isabella



Sarah Price
as Catherine



Meg Warner
as Eleanor