



REMY BUMPPPO

think theatre

**BLUES
FOR AN
ALABAMA
SKY**

BY **PEARL CLEAGE**

DIRECTED BY **MIKAEL BURKE**

SEPTEMBER 14 - OCTOBER 15, 2023

**THEATER WIT, 1229 W. BELMONT AVE,
CHICAGO, IL 60657**

REMY BUMPPPO THEATRE COMPANY

Land Acknowledgement

The stories we tell today rise from the ground sown by the story-tellers who have come before. Chicago is the traditional homeland of the Council of Three Fires: the Ojibwe, Odawa and Potawatami nations, as well as the Miami, Ho-Chunk, Fox, and the Illinois Confederacy of the Peoria and Kaskaskia nations. In 1830 Congress forcibly stripped these tribes of their land by passing the Indian Removal Act which led to relocation, poverty, and starvation. We wish to recognize the many indigenous people who continue to call Chicago home, who serve as stewards for their cultures and guardians for their land and waterways. We also wish to acknowledge the violent history of the space we use today. We are learning how to take more accountability for and responsibility for the land we also call home.

Mission

Remy Bumpopo expands and enriches our community's view of the world, and our own, by producing both the great plays of the past and the important plays of today. As an ensemble-driven theater company, we author a more humane culture as we listen to, and seek to understand, the voices, the ideas, and the stories of one another.

Value Statements

We believe in....

Language: We cherish beautiful language—clear, precise, and nuanced—in the service of great storytelling. Words are the building blocks of knowledge and shape the ideas that shape our world.

Learning: We champion the humanities as a force for examining ourselves, appreciating and understanding others, and exploring worlds we inhabit and those we discover. Using reason and imagination, we ask questions, prize complexity, embrace ambiguity, and challenge assumptions.

Diligence: We strive to maintain an aesthetic of clarity and precision in our work through research and preparation, and through creating with courage and joy. This aesthetic informs the entire organization and the day-to-day commitment of the Artists, Board, and Staff.

Collaboration: We build community and trust with collaborators through dialogue, respect, and openness. Our best work is done together. Our artistic success depends on the strength and equity of our entire company. Everyone's ideas and imagination have value in the creative process. Every artist is an instrument of curiosity and inspiration.

Diversity & Inclusion: We prioritize and pursue a breadth and depth of experiences and perspectives, and cultivate a community where individuals are fully engaged in the work, are a respected part of the whole, and are empowered to bring their all to the art.

A Healthy Culture: We create a joyful, compassionate workplace where the audience, artists, staff, and board are respected and supported, ideas are shared without judgment, and curiosity and risk-taking are encouraged. We value humility, see setbacks as learning opportunities, learn from criticism, and find inspiration in the success of others.



Artistic Director, **Marti Lyons**
Executive Director, **Margaret McCloskey**

BLUES FOR AN ALABAMA SKY

by **Pearl Cleage**

Directed by
Mikael Burke

Stage Manager
Jean E. Compton*

Scenic Design
Lauren M. Nichols

Costume Design
Gregory Graham

Lighting Design
Becca Jeffords

Sound Design
Peter Clare

Properties Design
Sam Paulson

Dialect & Vocal Designer
Shadana Patterson

Wig Design
Ray Sanchez

Intimacy & Fight Designer
Maya Vinice Prentiss

Music Director
Thee Ricky Harris

Dramaturg
Martine Kei Green-Rogers

Casting Director
Jasmine B. Gunter

Casting Consultant
Katie Galetti

SEASON SPONSORS
Brenda and James Grusecki
Lynne Simon
Charlotte Toerber

ASSOCIATE PRODUCTION SPONSORS
Geoffrey A. Anderson
Tessa and Arnie Dratt
Mary and Bruce Feay
Nancy A. McDaniel and Douglas S. Gorman

ASSISTANT PRODUCTION SPONSORS
Dan and Nancy Durbin
Timothy Morrison and Katherine Ross

BLUES FOR AN ALABAMA SKY is presented by special arrangement
with Dramatists Play Service., Inc., New York.

THEATER WIT, 1229 W. Belmont Ave., Chicago, IL | BOX OFFICE: 773.975.8150

A NOTE FROM THE ARTISTIC DIRECTOR



Blues for an Alabama Sky is a staggering work that is both timely and timeless. Set in 1930, written in 1995, the piece is searingly relevant today. Throughout the play, Pearl Cleage's exploration of reproductive rights and bodily autonomy is complex, resonant, and pressing.

Also integral to Cleage's work is the theme of friendship, and it is unique that friendship is the primary relationship in a play. At the center of this story are the friendships between Angel, Guy, Delia, and Sam. As this group navigates the world and all the challenges within it, they turn to each other for support. When this bond is disrupted by the events of the play, they (and we) must contend with the consequences that follow. The way that Cleage crafts and explores the dynamics of this group is another part of what makes this work remarkable.

I am thrilled to present Pearl Cleage's seminal work at Remy Bumpo. Through Angel and her friends' experiences, Cleage has authored a narrative that is both specific and universal. Through her expert storytelling, Cleage has created a work that speaks as much to now as it does to then.

- *Marti Lyons, Artistic Director*

CAST

Delia.....	Jazzlyn Luckett Aderede
Guy.....	Breon Arzell*
Leland.....	Ajax Dontavius
Angel.....	Tiffany Renee Johnson*+
Sam.....	Edgar Sanchez*

Understudies

Michelle Bester (U/S Angel); Jordan Gleaves (U/S Sam); Jelani Julyus (U/S Guy);
Monty Kane (U/S Leland); Tae Santos (U/S Delia)

PRODUCTION AND DESIGN TEAM

Director.....	Mikael Burke
Stage Manager.....	Jean E. Compton*
Associate Director.....	Jasmine B. Gunter
Assistant Stage Manager.....	Anna Vu
Dramaturg.....	Martine Kei Green-Rogers
Assistant Dramaturg.....	Camille Rose Pugliese
Scenic Designer.....	Lauren M. Nichols
Costume Designer.....	Gregory Graham
Assistant Costume Designer.....	Janelle Smith
Wig Designer.....	Ray Sanchez
Lighting Designer.....	Becca Jeffords
Assistant Lighting Designer.....	Liz Gomez
Sound Designer.....	Peter Clare
Properties Designer.....	Sam Paulson
Assistant Properties Designer.....	Sam Lancaster
Intimacy & Fight Designer.....	Maya Vinice Prentiss
Music Director.....	Thee Ricky Harris
Dialect & Vocal Designer.....	Shadana Patterson
Production Manager.....	Addoris Davis
Technical Director.....	Manuel Ortiz
Assistant Technical Director.....	Jacob Mulcahy
Scenic Charge Artist.....	Emily Altman
Head Electrician.....	Nick Chamernik
Wardrobe Supervisor.....	Matthew Meyer
Casting Director.....	Jasmine B. Gunter
Casting Consultant.....	Katie Galetti
Creative Producer.....	Christina Casano

+ Denotes Remy Bumpo Core Ensemble Member; ^ Denotes Remy Bumpo Associate Artist



*Denotes member of Actors' Equity Association,
the union of professional Actors and Stage Managers

Video and/or audio recording of this performance by any means whatsoever is strictly prohibited.

The play will run 2 hours and 40 minutes including a 15 minute intermission.

Remy Bumpo is a professional theater company operating under an agreement between the
Producers Association of Chicago Theaters and Actors' Equity Association.

Remy Bumpo is a member of the League of Chicago Theatres as well as the Belmont Theater District.

COMING SOON...

REMY BUMPPPO

think theatre



LOVE SONG

BY JOHN KOLVENBACH DIRECTED BY MARTI LYONS

MARCH 21 - APRIL 21, 2024

Beane has always been different. Joan, his sister, is his only real bridge to the outside world, but she is consumed with her own life, climbing the corporate ladder and sparring with her husband, Harry. When Beane falls madly in love with Molly, Beane's world suddenly expands, and the seismic shift forces all of them to reexamine their own relationships and discover new facets of human connection. An off-kilter romantic comedy, *Love Song* by John Kolvenbach is a quick-witted exploration of the countless complexities of love and the endless capacity of the heart.



Buy tickets!

BABES WITH BLADES THEATRE COMPANY Presents

THE DUCHESSES OF MALFI

WRITTEN BY JOHN WEBSTER
DIRECTED BY HAYLEY RICE

AT THE FACTORY THEATER
1623 W. HOWARD

SEPTEMBER 9TH THROUGH OCTOBER 21ST

FOR INFO AND TICKETS VISIT
BABESWITHBLADES.ORG

THE CAST



JAZZLYN LUCKETT ADERELE (*she/her*) (**DELIA**) is honored to be making her Remy Bumpo debut in *Blues for an Alabama Sky*. Chicago: **MIZ MARTHA** (u/s), *1919* (u/s, perf*), *How*

Blood Go (u/s) LA: *Diana of Dobson's* (Antaeus Theatre), *The Tragick Ecstasy of Girlhood* (Third Culture Theatre), *Shakespeare + Chill*, *Signed Lola* (Hollywood Fringe Festival) Television: *Chicago Fire*. Education: MFA, Northwestern University; BA, University of Illinois at Chicago; Art of Acting Studio, LA; RADA, London. Jeremiah 29:11.



BREON ARZELL (*he*) (**GUY**), Detroit native, is an actor, choreographer, writer, and teaching artist. While choreographing for MUNY, Oregon Shakespeare, The Kennedy Center & more, acting

credits include: *Incendiary & Ain't No Mo* (Woolly Mammoth Theatre, DC); *The Comedy of Errors*, *DREAM* (Chicago Shakespeare Theatre); *Little Shop of Horrors*, *Baskerville* (Metropolis PAC); *The Total Bent* (Haven w/ About Face); *A Christmas Carol*, *Objects in the Mirror* (Goodman Theatre) and more. TOURS: Theater Unspeakable, USA; White Horse Theatre, Germany; ACLE Theatrino, Italy. In the world of television, he is a recurring character on *South Side* (HBO Max), and choreographed for *The 4400* (CW). The recipient of 6 Joseph Jefferson Awards and 2 Black Theatre Alliance Awards, he has also been recognized as one of New City Magazine's 50 Players of Chicago in 2018, 2020 and 2023. Along with other original works (both theater and screenplays), he is the co-creator and playwright of the revival and resurrection of the historical black musical, *In Dahomey*. @breonarzell and breonarzell.com



AJAX DONTAVIUS (*he/him*) (**LELAND**) is proud to be debuting in his first show with Remy Bumpo Theatre! Recent credits include: *Last Night* and *The Night Before* (Steppenwolf Theatre); *Measure for*

Measure (Chicago Shakespeare Theater); *Fences* (American Blues Theater); *Middle Passage* (Lifeline Theatre). TELEVISION: *Chicago Fire* (NBC), *Chicago P.D.* (NBC), *61st Street* (CW).

FILM: *Rebranded*, *Duplicity*. AWARDS: Black Theater Alliance - Most Promising Actor (*Fences*). EDUCATION: BFA Acting, Roosevelt University - Chicago College of Performing Arts. "All love to God, my Wife, my Mom and Gray Talent Agency" Proverbs 3:5 ajaxdontavius.com



TIFFANY RENEE JOHNSON (*she/her*) (**ANGEL**) is a Chicago native with a BFA in Theatre from Howard University. Theatre credits include: *Chlorine Sky* (Steppenwolf Theatre);

The Garbologists (Northlight Theatre); *Passage* (Remy Bumpo); *School Girls; Or, The African Mean Girls Play* (Goodman Theatre); *Red Velvet* (Chicago Shakespeare Theatre); *Ma Rainey's Black Bottom* and *A Doll's House* (Writers Theatre); *Flyin' West* (American Blues Theatre); *Saint Joan* (Poetic Forum Collective); *VANYA; Or, That's Life!* (Rasaka Theatre); *The Nativity* (Congo Square Theatre); *Hairspray* (Drury Lane Theatre). TV credits include: *Shameless* and *The Chi* (Showtime); *Chicago P.D.*, *Chicago Med*, *Chicago Fire* (NBC); *Soundtrack* (Hulu), *Chicago Med* (NBC), *APB* (FOX), *Embeds* (Verizon go90). Film credits include: *Range Runners*, *North of the 10*, and *Training Wheels*. Tiffany is an artist in constant pursuit of the truth wrapped in story and thanks her family and Dev for their consistent support of that. To God be the glory. TiffanyReneeJohnson.com

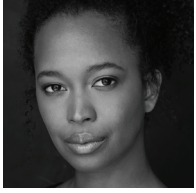


EDGAR MIGUEL SANCHEZ (*he/they*) (**SAM**) born in the Dominican Republic, raised in Miami, FL, earned his BFA in Acting from The Theater School at Depaul University with a minor in

Sociology. Chicago acting credits include: *Toni Stone; Sweat, stop.reset.* (Goodman Theatre), *Romeo in Romeo and Juliet*, *Macbeth*, *Twelfth Night* (Chicago Shakespeare Theater); *In The Next Room or the vibrator play* (Timeline); *Hobo King*, *Brothers of the Dust* (Congo Square); *Water by the Spoonful*, *Native Son* (The Court); *The Wheel* (Steppenwolf). REGIONAL: *Hamlet in Hamlet* (GableStage); *Twelfth Night*, *Richard III*, *Troilus and Cressida*, *The Admirable Crichton* (APT); *A Midsummer Night's Dream*, *Othello*, *The Comedy of Errors* (OSF). *Fences* (ATC, Indiana Rep, Milwaukee Rep); *Water by the Spoonful*

THE CAST (CONTINUED)

(TheatreSquared); *That Must Be The Entrance To Heaven* (Urbanite); FILM: *Blueprint, 3 Days*; TELEVISION: *Chicago MED, Sense8, Chicago P.D.* @edgar_miguel_sanchez



TAE SANTOS (*she/her*) (**U/S DELIA**) is an actor, director, and writer originally from Bakersfield, CA. She is a recent graduate from The Theatre School at DePaul

where she received her MFA. This is her first time working with Remy Bumpo and she is very excited to be part of this production. Thank you to the whole *Blues* production team.



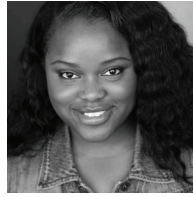
JELANI JULYUS (*he/him*) (**U/S GUY**) believes in the power of story to transform society and possesses a unique ability to find the hope nestled at the heart of any story. Recently, he originated

the role of Larry in Stage Left's world premiere of *In the Back/On the Floor*, and played Crane in the St. Sebastian Players' production of *The Book of Will*. Jelani trained at Black Box Acting Studio, where he completed The ACADEMY in 2022, and he is grateful for the opportunity to work with Remy Bumpo, this incredible cast, and our exceptional creative team. Jelani Julyus is represented by 10 Management, and you can follow him @jelanijulyus on Instagram or at jelanijulyus.com. He dedicates his career as an actor to his children and hopes they learn that it's never too late to pursue your dreams.



MONTY KANE (*he/him*) (**U/S LELAND**) is new to Remy Bumpo! He was born and raised in Milwaukee, Wisconsin where he earned a bachelor's degree in Theatre Arts at Cardinal

Stritch University. In college, he appeared in 16 stage plays, and 6 leading roles, including musicals and children's shows. Monty wants to thank Remy Bumpo for this pleasant opportunity to be apart of such an important play. He also sends a special thanks to those who are in attendance to support the arts.



MICHELLE BESTER (*she/her*) (**U/S ANGEL**)

is making her debut with the Remy Bumpo Theatre Company and is honored to be doing so. Black Ensemble Theater (directing): *The Real*

Housewives of Motown, Grandma's Jukebox. Chicago: *Chlorine Sky* (Steppenwolf), *In The Next Room* (Idle Muse Theatre), *Booty Candy* (Windy City Playhouse), *The Few* (Steep Theatre). Television: *Chicago Fire, The Red Line, Electric Dreams.*



JORDAN GLEAVES (*he/him*) (**U/S SAM**) is elated

to join Remy Bumpo Theatre for his first time. Theatre credits include: *Ezekiel's Wheel* and *Ride Or Die* (MPAACT), *Macbeth* and *Julius Caesar* (Nashville

Shakespeare Festival), *Relentless* (TimeLine Theatre and Goodman Theatre), *Othello* and *Love's Labour's Lost* (Montana Shakespeare in the Parks), and *Sunset Baby* (Fleetwood-Jourdain Theatre) Film credits include *CIG, BAM!*, and *DOWNSTATE*, which he also co-wrote with director Jordan Tragash. A proud company member of both MPAACT and Theatre L'Acadie, Jordan holds an MFA in Acting from the University of Illinois at Urbana-Champaign and a BA in Drama from Morehouse College. He is represented by Stewart Talent. "I don't want to work so hard on the body I forget about the soul." - Sam

PRODUCTION PROFILES



PEARL CLEAGE (*she/her*) (**PLAYWRIGHT**) is an Atlanta-based writer whose plays include *Pointing at the Moon*, *What I Learned in Paris*, *Flyin' West*, *Blues for an Alabama Sky*, and *Bourbon*

at the Border, commissioned and directed by Kenny Leon at the Alliance Theatre. She is also the author of *A Song for Coretta*, written in 2007 during Cleage's time as Cosby Professor in Women's Studies at Spelman College. Her play, *The Nacirema Society Requests the Honor of Your Presence at a Celebration of Their First One Hundred Years*, was commissioned by the Alabama Shakespeare Festival and premiered in 2010, in a joint production by the ASF and Atlanta's Alliance Theatre, directed by Susan Booth. Her plays have also been performed at Arena Stage, Hartford Stage, the Oregon Shakespeare Festival, the Huntington Theatre, the Alabama Shakespeare Festival, the Long Wharf Theatre, Just US Theatre, True Colors Theatre, Bushfire Theatre, the Intiman Theatre, St. Louis Black Repertory Company, and Seven Stages. She is also an accomplished performance artist, often working in collaboration with her husband, writer Zaron W. Burnett, Jr. They have performed at the National Black Arts Festival, the National Black Theatre Festival, and colleges and universities across the country. Cleage and Burnett also collaborated with performance artists Idris Ackamoor and Rhodessa Jones on the script for *The Love Project*, which premiered at the National Black Theatre Festival in 2008, and is currently touring the country. Cleage is also an accomplished novelist. Her novels include *What Looks Like Crazy on an Ordinary Day*, a New York Times bestseller and an Oprah Book Club selection, *I Wish I Had a Red Dress*, *Some Things I Never Thought I'd Do*, *Babylon Sisters*, *Baby Brother's Blues*, *Seen It All and Done the Rest*, and *Till You Hear from Me*. She is also the author of *Mad at Miles: A Blackwoman's Guide to Truth*, a groundbreaking work of race and gender, and *We Speak Your Names*, a praise poem commissioned by Oprah Winfrey for her 2005 celebration of legendary African American women and written in collaboration with Zaron Burnett. Cleage has also written for magazines, including *Essence*, *Vibe*, *Rap Pages*, and *Ms.* In addition to her work as the founding editor of *Catalyst* magazine, a literary journal, she was a regular columnist for the Atlanta Tribune for ten years, winning many awards for her thought-

provoking columns. She has also written for TheDefendersOnLine.com. Cleage has been awarded grants in support of her work from the National Endowment for the Arts, the Fulton County Arts Council, the Georgia Council on the Arts, the Atlanta Bureau of Cultural Affairs, and the Coca-Cola Foundation. Her work has earned her many awards and honors, including an NAACP Image Award for fiction in 2008. Pearl Cleage is represented by Ron Gwiabda at Abrams Artists Agency in New York City. Her website is www.PearlCleage.net. She also maintains a Facebook fan page. www.pearlcleage.net



MIKAEL BURKE (*he/him*) (**DIRECTOR**) is a Chicago-based director, deviser, and educator. A Princess Grace Award-winner in Theatre and Jeff Award-nominated director, Mikael's worked

with Goodman Theatre, About Face Theatre, Victory Gardens Theatre, Northlight Theatre, Raven Theatre, Jackalope Theatre Company, First Floor Theater, American Theatre Company, Chicago Dramatists, The Story Theatre, and Windy City Playhouse in Chicago, and regionally with Theatreworks Hartford, Forward Theatre Company, Milwaukee Chamber Theatre, Indiana Repertory Theatre, Asolo Repertory Theatre, Geva Theatre Center, Third Avenue Playworks, and Phoenix Theatre Indianapolis. Mikael previously served as Associate Artistic Director of About Face Theatre and has taught at Depaul University, Roosevelt University, and Butler University. Recent directing credits include *Two Mile Hollow* by Leah Nanako Winkler; the American premiere of *Routes* by Rachel De-Lahay, *The Wanderers* by Anna Ziegler, Shakespeare's *Richard III*, the world and Chicago premieres of *The Magnolia Ballet* by Terry Guest (2022 Jeff Award Winner – Production, Short Run); *Fireflies* by Donna R. Love (Black Theatre Alliance Award – Best Direction of an Ensemble). mklburke.com

JEAN E. COMPTON (*she/her*) (**STAGE MANAGER**) is glad to return to Remy Bumppo, where she previously stage managed *Galileo's Daughter*, *Anna in the Tropics*, and *Passage*. She is a stage manager, collaborator, and new works booster whose Chicago credits include *Paradise Square* (Pre-Broadway), *Thirst* (Strawdog Theatre Company), *The Death of Gaia Divine* (Momentary Theatre), *3:35PM*, *Candide*, and

PRODUCTION PROFILES (CONTINUED)

Mudpie 2018 (Mudlark Theater Company), *You for Me for You* (Sideshow Theatre Company), *Lizzie* (Firebrand Theatre), and *Shining Lives* (Northlight). Her regional credits include *Into the Breeches!* (Cleveland Play House), *Cannabis Passover*, *Proximity*, *Indecent*, *Blood at the Root*, *Commedia*, *A Midsummer Night's Dream*, *An Octoroon*, and *Into the Breeches!* (Chautauqua Theater Company), *Venus in Fur* and *The Whale* (Rep Stage), and *seasons* at Two River Theater and Cleveland Play House. Jean is a company member at The Passage Theatre where she has stage managed *The Miscellany*, *All-One! The Dr. Bronner's Play*, and *Spirits to Enforce*. She is a graduate of The Theatre School at DePaul University. www.jeanecompton.com

JASMINE B. GUNTER (*she/her*) (**ASSOCIATE DIRECTOR & CASTING DIRECTOR**) is a MFA directing candidate at Northwestern University. She is the 2021 recipient of the Hangar Directing Drama League fellowship, the 2020 recipient of the Leighton M. Ballew Directing Scholarship, and a SDC associate member. Recent directing credits include *The Revolutionists* (Northwestern University), *jump* (Northwestern University) *Lost Girl* (Hangar Theatre), *The Wonderful Wizard of Oz* (Hangar Theatre), *Hedda Gabler* (Northwestern University) *Wine in the Wilderness* (Wirtz Center for the Performing Arts), *Intimate Apparel* (SUNY Brockport), *Ghost Story* (Kane Repertory Theatre), *Lines in the Dust* (Geva Theatre Center), *Reroute* (24 Hour Plays: Nationals). Associate/Assistant Credit: *Nina Simone: Four Women* (Arena Stage), *In the Heights* (Seattle Rep), *Quixote Nuevo* (Hartford Stage/Huntington Theatre Company), and *The Luckiest People* (Actors Theatre of Charlotte/ NNPN). Jasmine has also taught at the Berkshire Theatre Group and the Redhouse Arts Center in Syracuse, NY.

ANNA VU (*she/her*) (**ASSISTANT STAGE MANAGER**) is a freelance stage manager originally from Lilburn, GA, but is now based in Chicago, IL. She graduated from Auburn University with a BFA in theatre management and a minor in marketing. Chicago credits include: *Buried Child* and *The Language Archive* (AstonRep), *Hershel and the Hanukkah Goblins 2022* and *Tarot Card Play* (Strawdog Theatre Company), *Toni Stone* (Goodman Theatre), *Galileo's Daughter* (Remy Bumpoo), *The Producers* (Music Theater Works). Some regional theatre credits include: *Murder on the Orient Express* and *Over the River and Through the*

Woods (Cortland Repertory Theatre), *Pericles and The Comedy of Errors* (Utah Shakespeare Festival), *The Nutcracker* (East Alabama Community Ballet). She currently serves as the production liaison at the Annoyance Theatre and Bar. She strives for women empowerment and diversity and inclusion in the art she creates. Upcoming projects include *Love Song* at Remy Bumpoo. She would like to thank her friends and family for their constant support. Much love to KC and Kenny the dog. vuanna.weebly.com

MARTINE KEI GREEN-ROGERS (*she/her*) (**DRAMATURG**) is the Dean of the Theatre School at DePaul University. Her dramaturgical credits include *its not a trip, its a journey*, *He Brought Her Heart Back in a Box* and *The Ohio State Murders* at Round House Theatre; *Wind in the Door* and *Long Way Down* at the Kennedy Center; *The Catastrophist* at Marin; *Sweat* at the Goodman; *King Hedley II*, *Radio Golf*, *Five Guys Named Moe*, *Blues for An Alabama Sky*, *Gem of the Ocean*, *Waiting for Godot*, *Iphigenia at Aulis*, *Seven Guitars*, *The Mountaintop*, and *Home* at Court Theatre; *It's Christmas, Carol!*, *Hairspray*, *The Book of Will*, *Shakespeare in Love*, *UniSon*, *Hannah and the Dread Gazebo*, *Comedy of Errors*, *To Kill A Mockingbird*, *The African Company Presents Richard III*, *A Midsummer Night's Dream*; and *Fences* at the Oregon Shakespeare Festival. Broadway credits include *Jagged Little Pill*.

CAMILLE ROSE PUGLIESE (*she/her*) (**ASSISTANT DRAMATURG**) is a senior at The Theatre School at DePaul University studying Dramaturgy & Dramatic Criticism. Theatre School credits include *Unaccompanied* and *Much Ado About Nothing* (Dramaturg).

LAUREN M. NICHOLS (*she/her*) (**SCENIC DESIGNER**) is a freelance designer, scale model builder, and draftsman. Recent design credits include *Tiger Style* (Writers); *Cinderella* (Village Theatre- Seattle); and *In Every Generation* (Victory Gardens). She has also designed for Renaissance Theatreworks- Milwaukee, UIC, DePaul Opera, Glass Apple, The Gift Theatre, Firebrand, Hell In a Handbag, BoHo, and Rivendell. This is her 2nd show with Remy Bumpoo as she designed *Anna in the Tropics* earlier this year. As an assistant she has worked with Julliard, NY Theatre Workshop, St. Louis Opera, Goodman, Milwaukee Rep, The Alliance, and Oregon Shakes among many others. Upcoming shows this season include designs for

PRODUCTION PROFILES (CONTINUED)

Steppenwolf, University of Chicago, and Teatro Vista. She currently teaches drafting and digital design at The Theatre School-DePaul University, MFA Northwestern. laurenangeldesigns.com

GREGORY GRAHAM (*he/him*) (**COSTUME DESIGNER**) is a Chicago costume designer. His credits include: Chicago: *Anna in the Tropics*, *Routes* (Remy Bumpo); *The Best Little Whorehouse in Texas* (Theo Ubiq Cabaret Theatre); 1919 (Steppenwolf Theatre); *Enough to Let The Light In* (Teatro Vista); *Private Lives* (Raven Theatre); *The Garbologists*, *Fireflies* (Northlight Theatre); *Rent*, *Porchlight Revisits: Passing Strange* (Porchlight Music Theatre); *Gloria*, *Reverb* (UIC School of Theatre and Music); *On the Greenbelt*, *Herschel and the Hanukkah Goblins* (Strawdog Theatre); *The Tragedy of Othello, the Moor of Venice* (Court Theatre); *Dream: A Community Reimagining of A Midsummer's Night Dream* (Chicago Shakespeare Theatre); *The Facts of Life: Satan's School for Girls*, *The Drag Seed* (Hell in a Handbag Productions). Regional: *Raisin* (Skylight Music Theatre); *Blood at the Root* (Millikin University, School of Theatre and Dance). Education: BA in Theatre Design, University of Illinois at Chicago. gregorygrahamdesign.com

JANELLE SMITH (*they/she*) (**ASSISTANT COSTUME DESIGNER**) is a Chicago-based costume designer, wardrobe, and stylist who has worked at Writer's Theatre, Marriott Theatre, Oil Lamp Theater, Oak Park Festival Theatre, Illinois Shakespeare Festival, Tuacahn Center for the Arts, University of Chicago, and The Gateway Playhouse doing wardrobe, hair, makeup, and costume design. After finishing their BFA in Theatrical Production and Design at Western Michigan followed by an MFA in Costume Design from Illinois State University. Janelle is excited to be a part of the team that made *Blues for Alabama Sky* a reality.

RAY SANCHEZ (*he/him*) (**WIG DESIGNER**)

BECCA JEFFORDS (*she/they*) (**LIGHTING DESIGNER**) is thrilled to be returning to Remy Bumpo for *Blues for an Alabama Sky*. She previously designed *Galileo's Daughter* and *Top Girls* with Remy Bumpo. Some Chicago credits include: *Extra Yarn*, *Bunnacula*, *Neverwhere*, *Arnie the Donut*, *Sparky!* and *Soon I will be Invincible* (Lifeline Theatre). *At the Vanishing Point* (The Gift); *Private Lives*, *Sundown Yellow Moon*, *A Doll's House*, *Nice Girl* (Raven Theatre);

A Snowy Day with Beatrix Potter, *Wake Up Brother Bear* (Chicago Children's Theatre); *Southern Gothic* (Windy City Playhouse). She received her MFA in Lighting Design from Northwestern University.

LIZ GOMEZ (*she/her*) (**ASSISTANT LIGHTING DESIGNER**) is happy to be working with Remy Bumpo again. Recent company credits include *Galileo's Daughter*, *Routes*, and *Passage*. Recent Chicago credits include *Right to be Forgotten* (Raven Theatre) and *Wasted* (Free Street Theatre). Love to Sophie.

PETER CLARE (*they/them*) (**SOUND DESIGNER**) is a multi-disciplinary theatre artist and musician recently arrived in Chicago from Milwaukee. They are delighted to be back at Remy Bumpo after designing last season for *Routes* and *Anna in the Tropics*. Other select sound design and music credits include: *Starlings* by Ben Daniel Parman, Soulstice Theatre; *The Dumb Waiter*, The Alchemist Theatre; *The Nautical Tragedy of Dick III*, Quasimondo Physical Theatre; *Quality Street*, Acacia Theatre; *Medea*, Voices Found Repertory; *Natural Shocks*, Third Avenue Playhouse/Next Act Theatre; and *The Island*, Milwaukee Chamber Theatre. Love and thanks to Kelsey, Sky, Erin, Jennifer, Ben, and their family at Zao MKE.

THEE RICKY HARRIS (*he/they*) (**MUSIC DIRECTOR**) is a performer and music director throughout the city. He's music directed *Extra Yarn* and *From the Mississippi Delta*; Lifeline Theatre, *Drowsy Chaperone*; Chicago Christian High School, *The Tragedy of King Christophe*; The House Theatre of Chicago, *Herschel and the Hanukkah Goblins*; Strawdog Theatre, *Cardboard Piano*; Timeline Theatre, *Broadway Bound Dance Class*; All About Dance, *First Deep Breathe* and, *The House That Will Not Stand*; Victory Gardens Theater, *Hoodoo Love*; Raven Theatre, *Lyle Lyle Crocodile*; Lifeline Theatre, *Direct from Deathrow the Scottsboro Boys*; Raven Theatre (Jeff Award for Best Ensemble), *25th Annual Putnam County Spelling Bee*; Beverly Arts Center to name a few. Follow @thee_ricky_harris to be in the know of everything going on in Chicago!

SAM PAULSON (*he/him*) (**PROPERTIES DESIGNER**) has worked as a designer on both theater and television productions in Chicago. Originally from Pennsylvania he studied Cinema and Photography at Ithaca

PRODUCTION PROFILES (CONTINUED)

College. This is his first production with Remy Bumpo. His previous work includes *The Crucible* at the Invictus Theater, *Extra Yarn* at the Lifeline Theater, *Justified City Primeval* on FX, Appletv's *The Shinning Girl*, and the Aldi 2022 Holiday campaign. Outside of prop design he enjoys working on short films in Chicago independent film community, as well as cooking for friends and family. He can be reached at spaulson22@gmail.com.

SAM LANCASTER (*he/him*)
(ASSISTANT PROPERTIES DESIGNER)

MAYA VINICE PRENTISS (*she/her*)
(INTIMACY & FIGHT DESIGNER)

SHADANA PATTERSON (*she/her*)
(DIALECT & VOCAL DESIGNER) is an actor and educator who is happy to return to Remy Bumpo where she previously served as an Assistant Dialect Coach for *Frankenstein*. Other dialect and vocal design credits include *Toni Stone* at Milwaukee Rep and Alliance Theatre, and *From the Mississippi Delta* at Lifeline Theatre. She is a Lessac Kinesensics Voice Practitioner and an adjunct professor of Voice & Speech at the Theatre School at DePaul University.

MANUEL ORTIZ (*he/him*) **(TECHNICAL DIRECTOR)** is thrilled to be joining Remy Bumpo! He is a Chicago native deeply engaged and devoted to the theater industry. Holding a BFA in Acting from DePaul University, he has cultivated his skills as an actor, carpenter, designer, and educator. Currently, Manuel is the Technical Director for Broadway in Chicago's *Teatro Zinanni*. Grounded in a commitment to collaboration, inclusivity, and equity, he consistently contributes to the thriving theater scene while fostering artistic communities.

JACOB MULCAHY (*he/him*)
(ASSISTANT TECHNICAL DIRECTOR)

EMILY ALTMAN (*she/her*) **(SCENIC CHARGE ARTIST)** is a Chicago-based Scenic Artist whose charge work with Remy Bumpo stretches back to 2006. She is currently the paint shop supervisor at The Theatre School of Depaul University, and leads teams of students and young professionals on dozens of Chicago theatre productions year round with her long time scenic partner Steven Abbott. Other current work of this scenic duo can be seen at Albany

Park Theatre Project's *Port of Entry* where they led a team of 10 artists in the creation of an interactive theatrical production that guides audiences through a whimsical, dreamlike 3-story apartment complex. She is thrilled and honored to introduce the artistry of 3rd year Raquel Dwight on *Blues for an Alabama Sky*, along with 4th year Shokie Tsuemah and recent Depaul graduate Caitlyn Girten.

NICK CHAMERNIK (*he/they*) **(HEAD ELECTRICIAN)** is excited to return to Remy Bumpo Theatre Company on his fourth production with the company. Previous RBTC credits include *Galileo's Daughter*, *Anna in the Tropics*, and *Passage* (Head Electrician). Other recent Chicago credits include *The Who's Tommy* at Goodman Theatre (Projections Operator), *Mesmerized* at Chicago Children's Theatre (Asst. Lighting Designer), *Radial Gradient* and *This Wide Night* with Shattered Globe Theatre (Head Electrician), and *The 92nd Annual Waa-Mu Show* and *Be Mean to Me* at Northwestern University (Head Electrician).

MATTHEW MEYER (*he/they*) **(WARDROBE SUPERVISOR)** is a fairly new face to the Chicago Theatre scene after moving here from Alaska. They were honored to be a part of the wardrobe crew for *The Who's Tommy* at the Goodman Theatre this summer, and they're excited to bring what they've learned from that experience to this production.

KATIE GALETTI (*she/her*) **(CASTING CONSULTANT)** is grateful to return to Remy Bumpo as a Casting Consultant for the 23/24 season. She primarily serves as the Artistic Producer and Casting Director at Writers Theatre in Glencoe. In addition to her work at Writers, Katie produces events of multiple genres, including opera, digital, experiential, and film. She's worked with Little Cinema Digital, 13Exp, and HERE Arts & Culture Consulting as a producer, and is the founder and Artistic Director of Janus Concert Series. In addition to her theatre work, Katie is a volunteer with Resilience Chicago and a classically trained vocalist.

PRODUCTION PROFILES (CONTINUED)



MARTI LYONS (*she/her*)
(ARTISTIC DIRECTOR)

most recently directed the world-premiere of *Galileo's Daughter* by Jessica Dickey at Remy Bumpgo, *Georgiana and Kitty: Christmas*

at Pemberly at Northlight Theatre, *Wife of a Salesman* by Eleanor Burgess at Milwaukee Rep, *Sense and Sensibility* adapted by Jessica Swale at American Players Theatre and the world-premiere of *John Proctor is the Villain* by Kimberly Belflower at Studio Theatre in D.C. Marti's other productions include *The Niceties* by Eleanor Burgess at Writers Theatre; *Cymbeline* at American Players Theatre; *The Wolves* by Sarah DeLappe and both the stage and audio productions of *Kings* by Sarah Burgess at Studio Theatre; the world-premiere of *How to Defend Yourself* by Iliana Padilla, a Victory Gardens and Actors Theatre of Louisville co-production; *Cambodian Rock Band* by Lauren Yee at Victory Gardens and City Theatre; *Witch* by Jen Silverman at Geffen Playhouse and Writers Theatre (LA Drama Critics Circle Award for Best Direction); *Native Gardens* by Karen Zacarias at Victory Gardens; *Botticelli in the Fire* by Jordan Tannahill at Woolly Mammoth Theatre Company; *I, Banquo* at Chicago Shakespeare Theater; *Title and Deed* by Will Eno at Lookingglass Theatre Company; Laura Marks' *Bethany and Mine* at The Gift Theatre. Marti is also an ensemble member at The Gift Theatre, and a member of Stage Directors and Choreographers Society. martilyons.com



MARGARET McCLOSKEY
(*she/her*) **(EXECUTIVE DIRECTOR)**

has been with Remy Bumpgo since 2014 where she previously served as Director of Development and Managing Director

before becoming Executive Director in July 2020, working closely with the Artistic Director to develop and steward strategic initiatives for organizational growth. Previously, she was a fundraising consultant with Aaron Consulting in New York City, managing high-level fundraising campaigns for a number of east coast organizations. Other past work includes positions at the Ford Foundation, Blue Man Productions, Chicago Opera Theater, Rotary International, and the League of Chicago

Theaters. Theatre is her first love, and she holds an MFA in Playwriting from the New School for Drama in New York City and a BFA from the University of Illinois at Champaign-Urbana.

MACKENZIE SCHLEYER (*she/her*) **(DIRECTOR OF MARKETING & COMMUNICATIONS)**

has been with RBTC since 2016 and is beyond excited for *Blues for an Alabama Sky* to kick off the 23/24 season! Prior to joining RBTC, she worked at Florida Studio Theatre as their Marketing Assistant for 3 seasons where she worked on 60+ mainstage, cabaret, improv, and children's theatre productions as well as community engagement events and educational programs. Mackenzie has also worked with Windy City Performing Arts and has choreographed for multiple schools and events within the Chicagoland, Milwaukee and Sarasota, Florida areas. She holds a BFA in Theatre Management and Promotions as well as a minor in Dance from the University of Wisconsin - Whitewater.

CHRISTINA CASANO (*she/her*) **(CREATIVE PRODUCER)**

is a theatre artist based in Chicago. Her training includes a BA in Theatre from Miami University, Victory Gardens Theater's Director's Inclusion Initiative, and the Shakespeare Theatre of New Jersey's Summer Professional Training Program. Selected directing credits: *I Build Giants* and *Poison* (The Plagiarists), *A Midsummer Night's Dream* (Stone Soup Shakespeare), *How To Murder...* (workshop, Bramble Theatre), *Blood of My Mother's* (workshop reading, Wayward Sisters), *Plaid As Hell* (Babes With Blades), *Deep Shadows* (audio drama, Eclectic Full Contact Theatre), *Fame Heaux* (staged reading, Lanford Wilson New American Play Festival), *The Living Newspaper Festival* (Jackalope Theatre), *Fighting Words Festival* (Babes With Blades). Other favorite projects: *Some Like It Red* and *The Epic of Gilgamesh*, etc. (The Plagiarists), *How To Defend Yourself* (Victory Gardens), *Bury Me* (Dandelion Theatre), *The Light Fantastic* (Jackalope Theatre). She is also the Artistic Director of The Plagiarists. www.cmrcasano.com

ADDORIS DAVIS (*they/she*) **(PRODUCTION MANAGER)**

is excited to kick off the 23/24 season here at Remy Bumpgo! In the Chicago area, they have also worked as the production manager for *The Jigsaw Bride*, *The Secret Council*, *Jeeves Intervenes*, *Little Women* and the upcoming *And Neither Have I Wings To Fly*, and *Twelfth Night* (First Folio Theatre). Originally from Alaska, they have worked as a stage manager

PRODUCTION PROFILES (CONTINUED)

for Cyrano's Theatre Company, Anchorage Community Theatre, Alaska Fine Arts Academy, Pier One Theatre, and the University of Alaska. Adi also was a member of the campaign staff for Alaska's Democratic Senate candidate Al Gross in the 2020 election. Addoris holds a Bachelor of Arts degree in Technical Theatre from the University of Alaska.

BAILEY MEDLEY (*she/her*) (**DEVELOPMENT MANAGER**) joined RBTC in August 2022 and has loved working and growing with the Remy Bumpo team. Bailey holds a Bachelor of Fine Arts degree in Cinema with minors in Marketing and History from Southern Illinois University - Carbondale. Theatre quickly became a passion in college, where she worked as a Marketing Assistant & Videographer for the SIUC Department of Theatre. Outside of Remy Bumpo, Bailey enjoys spending time with the friends and family she has found in Chicago, especially her cats, Poe and Ernest.

EMILY SZYMANSKI (*she/her*) (**ADMINISTRATIVE & COMMUNICATIONS ASSISTANT**) graduated from the University of Wisconsin - Eau Claire last year with her Bachelor of Arts in Comprehensive Theatre. Credits include roles in *Silent Sky*, *Head Over Heels*, *Hand to God* and *The House of Blue Leaves*. Production credits include *Murder by Midnight* (Director), *Alice in Wonderland* (Co-Director), *Medea* (Asst. Stage Manager), *Failure: A Love Story* (Producer) and more. Since graduating, Emily has worked with the Milwaukee Repertory Theatre, Sunstone Studios and First Stage Children's Theatre in Milwaukee, as well as Co-Directing *Legally Blonde* at her old High School. She moved to Chicago in May to advance her theatrical career and pursue acting. She's honored to be with Remy Bumpo and is looking forward to this upcoming season!

REMY BUMPPPO

think theatre

STUDIO BUMPPPO

INDUSTRY COURSES AND CLASSES FOR THEATRE LOVERS

Our Fall 2023 Session of classes and workshops has kicked off! Whether you're interested in a course that is back by popular demand or looking to check out something new, Studio Bumpo has a variety of classes just for you.

Visit RemyBumpo.org/classes for more information!

REMY BUMPPO THEATRE COMPANY

BOARD OF DIRECTORS

Joan Callahan, *President*
Marilyn B. Schaffer, *Vice President*
Richard Skolly, *Secretary*

Charín Álvarez, Daniel Durbin, Ron Eisenstein, Brenda Grusecki, David S. Lipschultz,
Marti Lyons, Margaret McCloskey, Kate McDuffie, Lynne H. Mock, Matthew Randle-Bent,
Karen Randolph, Lynne Simon, Charlotte Toerber, Lily Varón, Rebecca Zemans

CORE ENSEMBLE

Charín Álvarez, Annabel Armour, Terry Bell, Eduardo Curley, Linda Gillum,
Chiké Johnson, Tiffany Renee Johnson, Aurora Real de Asua

ASSOCIATE ARTISTS

Mike Durst, Kristy Leigh Hall, Yeaji Kim, Christopher Kriz, Joe Schermoly, Ellen Willett

ARTISTIC STAFF

Artistic Director..... Marti Lyons
Creative Producer..... Christina Casano

ADMINISTRATIVE STAFF

Executive Director..... Margaret McCloskey
Director of Marketing & Communications..... Mackenzie Schleyer
Development Manager..... Bailey Medley
Administrative & Communications Assistant..... Emily Szymanski
Accountant..... Illinois NFP Audit & Tax, LLP
Database/Technology Consultant..... Jeff Smalley
HR Consultant..... RTR Management and Consulting Services, LLC
Box Office and Performance Space..... Theater Wit
Production Photography..... Nomee Photography
Season Artwork..... Keyon Woods
Of Counsel..... Beverly Berneman, Golan Christie Taglia LLC

PRODUCTION STAFF

Production Manager..... Addoris Davis
Technical Director..... Manuel Ortiz
Casting Director..... Jasmine B. Gunter
Casting Consultant..... Katie Galetti

SUPPORTERS

Remy Bumpo Theatre Company relies on the generous support of philanthropic organizations and audience members like you to provide over 60% of our annual budget. We are profoundly grateful to the following individuals and institutions whose generosity over the past twelve months has provided the financial foundation for Remy Bumpo's mainstage productions and community engagement programs like the Between the Lines literary lectures and Studio Bumpo classes.

THE PRODUCERS CIRCLE

Remy Bumpo Theatre Company extends a very special thank you to this season's sponsoring producers, who play a meaningful role in the sustenance and advancement of Remy Bumpo's productions. Supporters who give a dedicated gift of \$2,500 or more are eligible to enjoy the Producers Circle distinction and accompanying special benefits.

Anonymous (2)	Mary and Bruce Feay	Karen Randolph
Terri Abruzzo Callahan	Douglas S. Gorman	and William Linden
and Dave Callahan	Dana Green and Thomas Clancy	Marilyn and Joel Schaffer
Geoffrey A. Anderson	Brenda and James Grusecki	Judith and David Sensibar
Martha Van Haitsma	Roberta Lee	Rhonda Rochambeau
and Gustavo Bamberger	David Lipschultz and Arin Stone	and Larry Shulman
Jill and Martin Baumgaertner	Nancy A. McDaniel	Lynne Simon
Zina Berman	Kate McDuffie	Kate Feinstein
Joan and Mike Callahan	Lynne Mock	and Richard Skolly
Becky Coleman	Timothy Morrison	Charlotte Toerber
Carol and Terry Coleman	and Katherine Ross	Lily Varón
Arnold and Tessa Dratt	Marsha and Robert Mrtek	Ryan Blitstein
Nancy and Daniel Durbin	Karen and Jim Prieur	and Rebecca Zemans
Jeff Rekett and Ron Eisenstein	Matthew	
	and Gabrielle Randle-Bent	

INDIVIDUAL CONTRIBUTORS

Remy Bumpo offers our sincere gratitude to the following individuals who made gifts to the Annual Fund between July 1, 2022 and August 25, 2023.

ANGEL (\$50,000+)

Brenda and James Grusecki
Lynne Simon

Arnold and Tessa Dratt

Mary and Bruce Feay
Dana Green and Thomas Clancy

Timothy Morrison

and Katherine Ross
Marsha and Robert Mrtek

VISIONARY

(\$25,000 - \$49,999)

Geoffrey A. Anderson
Charlotte Toerber

ADVOCATE (\$5,000 - \$9,999)

Anonymous
Terri Abruzzo Callahan
and Dave Callahan
Martha Van Haitsma
and Gustavo Bamberger
Jill and Martin Baumgaertner
Nancy A. McDaniel

BELIEVER (\$2,500 - \$4,999)

Zina Berman
Joan and Mike Callahan
Bob and Chie Curley
Douglas S. Gorman
Roberta Lee
Karen and Jim Prieur
Karen Randolph
and William Linden

AMBASSADOR

(\$10,000 - \$24,999)

Anonymous
Carol and Terry Coleman

INDIVIDUAL CONTRIBUTORS (CONTINUED)

Marilyn and Joel Schaffer
Judith and David Sensibar
Rhonda Rochambeau
and Larry Shulman
Kate Feinstein
and Richard Skolly

BENEFACTOR (\$1,000 - \$2,499)

Anonymous
Sheldon and Gela Altman
Tim and Holly Armour
Emily and Benjamin Berk
Bernice Bigelow
John and Claudia Boatright
Deborah B. Braxton
Rebecca Coleman
Joyce E. Chelberg
Jeff Rekett and Ron Eisenstein
Sandra K. Fernbach
and Eric J. Russell
Charles Hoffman
and Tamara Schiller
Dennis Klug
Margaret Silliker and John Ryan
Debra Siegel and Robert Altman
Terrance Stevenson
Catherine Stewart
and Geoff Smith
Mary Pat Studdert

PATRON (\$500 - \$999)

Anonymous
Howard Aronson
Leigh and Henry Bienen
Sherry and Paul Carbery
Richard Clark and Mary Munday
Debby Coleman
Steve and Michelle Cucchiaro
Un Sil Hwang and Stephen Esko
Peggy and Perry Goldberg
Leila Green
James Heneghan
Melissa Hilton
and Jonathan Perman
Judy Johanson
Diane and Chuck Laff
Corinne Lyon
Chuck Marien and Gaby Kuhn
Ernst Melchior
Scott Brown
and Steven Montner

James Perry and Robert Horton
Edwin and Susan Ritts
Janice Rodgers
and Robert Hagan
Doug and Genevieve Schuberth
Mary Beth Fisher
and Roche Schulfer
Victoria and Donald Scott
Thomas South
Greg and Anne Taubeneck

PARTNER (\$250 - \$499)

Anonymous (5)
Phyllis and Leonard Adams
Jeff Arena
Larry Bennett and Gwyn Friend
Cheryl Lynn Bruce and Kerry
James Marshall
Jim and Lori Burns
Judy M. Chernick
Roxanne Decyk and Lew Watts
Kelly Dineen
Len and Carla Feinkind
Laura and Nina Gorski
Brent Grinna
Elizabeth and Andrew Hibel
Janet and Brian Hoffman
Donald Honchell
and Susan Horn
Ellen Hunt and Charles White
Brenda Ashley
and Gary Johnson
John and Jill Klingenstein
Rachel Kraft
and Douglas R. Brown
Jeanne LaDuke
Corinne Marrinan Tripp
Bridget McDonough
Bonnie Beck
and Boyd McDowell
Laurie Merel
Priscilla Mims
Ann B. Mommsen
Susan Munro
Andrew and Sharon Plennert
Mr. and Mrs. Michael Pope
Sandy Rebitzer
and Neil Kleinborg
Joanna Riopelle
Barbara A. Sarasin
Walter Stearns

Thomas
and Gregoria Vega-Byrnes
Debbie and Alan Walters
Nancy Watrous
and Steve Journey
Brenda and David Wood
Dean Yannias
Ryan Blitstein
and Rebecca Zemans

CONTRIBUTOR (\$100 - \$249)

Anonymous
Jonathan Abarbanel
Cherie Balan and Jeff Kraus
Constance Bonbrest
Sue and Bob Bowker
Ricki and Jeanette Burger
Janet Burroway
Pam Carcerano
Ellen Chenoweth
Stephany Creamer
Jeananne Digan
and Chris Doherty
Michele Dornan
Nancy and Daniel Durbin
Kenneth A. East
and Timothy J. Thurlow
Mary English and Ellen Wildman
Merri and Mitchell Ex
Bernadette Foley
Andrea Friedman
Joanne and Robert Gannett
Ethel and Bill Gofen
David Goldberg
Margaret and Richard Gore
Jonathan L. Green
Martin Grochala
and Fred Reuland
Robert S. Guenther
and Steven Wilson
Ginny and Thomas Helm
Janet and Brian Hoffman
Maura Junius
Joy Kalligeros
and Donald Klappauff
Paula Kamen and David Beazley
Donna Kamuda
Matthew J. Keller
Jeffrey Kramer and Jan Kuhn
Carol B. Kriekard
Carole Sullivan and Jan Lavacek

INDIVIDUAL CONTRIBUTORS (CONTINUED)

Kenneth Leone
and Suzanne Reid
T.W. Li
Roselind Lindau
David Lipschultz and Arin Stone
Nancy Lukens
Scott and Simone Lutgert
Robert Lyons
and Julie Held-Lyons
Chris and Faith Manning
Barb Mason
Pamela McCabe
Kathy and Ken McNeil
Lynne Mock
Mara Monserrat
Erin and Martin Moran
Loretta and John Murphy
Lenz and Eva Neuhauser
Charles Newell
Clement O'Donnell

Mary and Michael Pavia
Scottie Perry
Wally Petersen
and Michael Tischleder
Linda and Alan Pieczynski
Dean Rapp
Thomas Ray
Linda R. Reifschneider
Mary Reistetter
James Engel Rocks
The Honorable John B. Simon
and Mrs. Millie Rosenbloom
Alice Sachs
Judith Sagan
Kent and April Schielke
Sandra Shane-DuBow
Brian and Melissa Sherman
Margaret Snow
Carol Stukey
Wally Berggren

and Fred Tadrowski
Elisa and Ophir Trigalo
Liat and Tali Tzur
Beverley and David Urschel
Nick and Joanna Vergoth
Dona Vitale
Anthony and Janet Walters
Debbie Wang and David Hoyt
Alexander Wayne
and Lynne Copp
Laurie and Jay Weissler
Dennis and Anne Wentz
Tilly Wilhoite
David Phillis and Kim Wilson
Ann Wise
Emi Yamauchi
Kate and Dean Yannias
Ben and Anne Zeidman
Robert E. Zeitner
Jamie and Richard Zelvin

BENEFIT CONTRIBUTORS

Our single largest fundraiser of the year, the annual benefit provides crucial funds for our productions. Remy Bumpo offers our sincere gratitude to the following contributors who made gifts in support of the 2023 Annual Benefit on April 30, 2023.

CORPORATE SPONSOR

Wintrust

CORPORATE PARTNER

CIBC

PLATINUM (\$4,000+)

Joan and Mike Callahan
Brenda and James Grusecki
Karen Randolph
and William Linden
Lynne Simon
Kate Feinstein
and Richard Skolly

GOLD (\$2,500 - \$3,999)

Becky Coleman
Carol and Terry Coleman
Mary and Bob DeCresce
Marilyn and Joel Schaffer
Charlotte Toerber

SUPPORTERS (\$250 - \$2,499)

Anonymous
Sheldon and Gela Altman
Sally and Vince Anderson
Sue and Bob Bowker
Deborah B. Braxton
Cheryl Lynn Bruce
and Kerry James Marshall
Judi and Tom Burnison
Kay Christ and Don Tomei
Debby Coleman
Lew Collens
Stephany Creamer
Julie Danis and Paul Donohue
Brenda Davis
Anthony Dillon
Deanna Dunagan
Nancy and Dan Durbin
Joyce E. Chelberg
Deborah and Scott Early
Jeff Reckett and Ron Eisenstein
Collete English Dixon

Erika Erich
Sandra K. Fernbach
and Eric J. Russell
Cindy Fluxgold
John Gable
Joanne and Robert Gannett
Margaret and Richard Gore
Douglas S. Gorman
Shelley Gorson
and Alan Salpeter
Charles Hoffman
and Tamara Schiller
Janet and Brian Hoffman
Ellen Hunt and Charles White
Vera Kimmi
Lorraine A. Kulpa
Carmelita and Ron Linden
Chris and Faith Manning
Corinne Marrinan Tripp
Nancy A. McDaniel
Roxane McLean
Steven Olson

BENEFIT CONTRIBUTORS (CONTINUED)

Mary and Michael Pavia
Walter J. Podrazik
Jennifer Pope
and Rakesh Madhava
Michael and Christine Pope
Merril Prager and John Levine
Catherine Randolph
Bonnie Rekett
The Honorable John B. Simon
and Mrs. Millie Rosenbloom
Faith Schoon
Victoria and Donald Scott
Ken and Betty Shay
Debra Siegel and Robert Altman
Mary Pat Studdert
Greg and Anne Taubeneck
Linda Gillum
and Guy Van Swearingen
Cindy Vanina
Dona Vitale
Steven Weinstein
and Gail Cooper
Dennis Zacek and Marcie McVay
Ryan Blitstein
and Rebecca Zemans

FRIENDS (UP TO \$250)

Annabel Armour and Art Fox
M.L. Bober
Tina Brier and David Shapiro
Jack Chalmers

Lisa Coburn
Jeananne Digan
and Chris Doherty
Diane Dorsey
Grace Eccarius
Margaret Fogarty
Patricia Gentry
Pamela Ginsberg
Carrie and Jay Gleason
Varda and Joel Goldman
Margarett Gorodess
Laura and Nina Gorski
Constance Greene
Susan Haimes
Melanie and Robert Halvorson
John Hess
Jill Metcoff and Jeff Jahns
Ron and Judy Jerome
Beth Jeswani
Bob and Mary Beth Jirgal
John and Jill Klingenstein
Jeffrey Kramer and Jan Kuhn
Roberta Lee
Arin Stone and David Lipschultz
Martha Logan
Kimberly and Andy Marhoul
Sarah Marino
Sheila and Jack Marks
John and Judy McCarter
Harry McClellon

Margaret McCloskey
and Patrick Allen
Kate McDuffie
Kate McKiernan
Lynne Mock
Scott Brown and Steven Montner
Lenz and Eva Neuhauser
Lois and Robert Neustadt
Carolyn Potts
Jennifer and Matthew Quinn
Linda R. Reifschneider
Alison and Rob Rich
Janice Rodgers and Robert Hagan
Jill Ruskusky
Nicolene Sarich
Karen and Frank Schneider
Deborah Darr and Kevin Shanley
Chris Sheard
Sandy Shinner and Jerry Wilson
Rita Skelton
Lucy Smith-Conroy
Robert Stearn and Elba Acevedo
Jane and Richard Terp
The Arts Club of Chicago
Bob and Mary Ann Tuerk
Graham Vanswearingen
Lily Varon
Lara Vergoth and Jason Warzecha
Nick and Joanna Vergoth
Sandy Shinner and Jerry Wilson
Barbara Wolf

CORPORATE, FOUNDATION, AND GOVERNMENT CONTRIBUTORS

The following organizations provided generous support to Remy Bumpo between July 1, 2022 and August 25, 2023.

\$25,000+

The MacArthur Fund for
Arts and Culture at Prince
Charitable Trusts

Illinois Arts Council

John R. Halligan Charitable Fund
The Shubert Foundation

\$1,500 - \$2,499

Invest in Others
Charitable Foundation
Lloyd A. Fry Foundation

\$10,000 - \$24,999

Anonymous
Gaylord and Dorothy
Donnelley Foundation

\$5,000 - \$9,999

Laughing Acres Foundation
The Saints

Up to \$499

Actors' Equity Foundation
AmazonSmile

\$2,500 - \$4,999

Coleman & Associates

TRIBUTES

The following donors made contributions in honor or memory of a friend or loved one between July 1, 2022 and August 25, 2023. We regret that, due to space limitations, we can only list tribute gifts of \$100 or more.

**IN HONOR OF
JOAN CALLAHAN**
Merri and Mitchell Ex
Janet and Brian Hoffman

**IN HONOR OF
BECKY COLEMAN**
Invest in Others
Charitable Foundation
Debbie and Alan Walters

**IN HONOR OF
RON EISENSTEIN**
Erin and Martin Moran

**IN HONOR OF
LINDA GILLUM**
Jeff Arena

**IN HONOR OF BRENDA
AND JAMES GRUSECKI**
Deborah B. Braxton

**IN HONOR OF BEVERLY
AND ARNOLD HOLLANDER**
Douglas S. Gorman

**IN HONOR OF
MARGARET MCCLOSKEY**
Ellen Chenoweth
Douglas S. Gorman

**IN HONOR OF
NANCY A. MCDANIEL**
Martin Grochala
and Fred Reuland

Scott and Simone Lutger
Wally Petersen
and Michael Tischleder
Linda R. Reifschneider
Debbie Wang and David Hoyt

**IN HONOR OF
BAILEY MEDLEY**
David Phillis and Kim Wilson

**IN HONOR OF KAREN
RANDOLPH**
Cherie Balan and Jeff Kraus
Joy Kalligeros
and Donald Klappauff
Nancy A. McDaniel
Bonnie Beck
and Boyd McDowell
Dona Vitale

**IN HONOR OF
KATE FEINSTEIN
AND RICHARD SKOLLY**
Peggy and Perry Goldberg
Margaret and Richard Gore
Merril Prager and John Levine
Dennis Zacek
and Marcie McVay

**IN MEMORY OF HERB
AND NANCY CHANNICK**
Jonathan Abarbanel

**IN MEMORY OF
JESSE DORNAN**
Michele Dornan

**IN MEMORY OF
PAUL RATLIFF**
Corinne Marrinan Tripp

**IN MEMORY OF
BONNIE AND SALLY ROSS**
Emily and Benjamin Berk

**IN MEMORY OF
SUSAN L. SCHULMAN**
Arnold and Tessa Dratt

**IN MEMORY OF
GEORGE SIMON**
Stephany Creamer
Roxane McLean

**IN MEMORY OF
ESTELLE SPECTOR**
Anthony and Janet Walters

**IN MEMORY OF THELMA LEE
THOMPSON BRUCE**
Cherly Lynn Bruce
and Kerry James Marshall

**IN MEMORY OF
JOE VAN SLYKE**
Anonymous

SPECIAL THANKS

The Remy Bumpo Board of Directors
American Writers Museum
Belmont Theater District
Beverly Berneman Leiberman and Golan Christie Taglia, LLC
Chicago Abortion Fund

Cultural Access Collaborative
The Goodman Theatre
The League of Chicago Theatres
Natalie Moore
Navy Pier

THERE ARE VARIOUS WAYS TO SUPPORT REMY BUMPPO!

Please explore the options belows and know that your gifts of time and financial support help us present the kind of thought-provoking, talk-provoking work that you have come to expect from Remy Bumpo.

INDIVIDUAL GIVING

Individuals make up over half of all contributions to the company. Gifts of all sizes make a huge difference in the quality of productions we bring to you.

BUMPPO BOOSTERS - RECURRING GIFTS

Become a Bumpo Booster and support Remy Bumpo's long-term sustainable growth by making a monthly or quarterly gift of any amount.

IN-KIND DONATIONS

Remy Bumpo is always looking for donation of goods or services to help us cut operating costs. If you or your business would like to donate in-kind, contact Bailey Medley, Development Manager at bmedley@remybumpo.org.

VOLUNTEER

Become a Remy Bumpo volunteer and keep our company thriving! We often seek volunteers to help with office tasks and events. To receive volunteer opportunities via email, contact our Administrative & Communications Assistant, Emily Szymanski at info@remybumpo.org or by calling 773-244-8119, x301.

BOARD AND COMMITTEE SERVICE

Blend your professional expertise with your passion for the arts. Interact with a dynamic group of people and play a vital role in Chicago's theater community. To learn more, contact us at info@remybumpo.org

**VISIT US AT REMYBUMPPO.ORG OR CALL US AT 773-244-8119
FOR MORE INFORMATION ON HOW TO SUPPORT REMY BUMPPO!**

SHARE YOUR EXPERIENCE!

Whether you're snapping a picture of your playbill or taking a selfie before the show, be sure to use the hashtag

#RBTCBlues

in your posts on Facebook,
Twitter, and Instagram.



[@remybumpo](https://www.instagram.com/remybumpo)



At Theater Wit

We are a theater company within a building, within a community, within a world.

As a production company, Theater Wit's mission is to be the premier "smart art" theater in Chicago by producing humorous, challenging, and intelligent plays that speak with a contemporary theatrical voice.

As an institution, Theater Wit seeks to be the hub of the Chicago neighborhood theater scene. In our three spaces, we bring together Chicago's best storefront theater companies. Here you will find a smorgasbord of excellent productions, see the work of a parade of talented artists, and mingle with audiences from all over Chicago.

In the Middle of a Community

Everyone here: folks in the audience... the person who handed you this program... somewhere on or off the stage there are actors... if you look up in the corner you might get a glimpse of the stage manager in the booth... We're all in this room for the same reason: to be a part of this shared experience. No matter who they are or where they come from; no matter if they are complete strangers or familiar faces; no matter how different the age, the race, or the walk of life; after this performance, you will have something in common. So, strike up a conversation in the lobby, introduce yourself to someone new. Meet our staff, shake hands with an actor, get a drink from our bar. We're all in this together.

Part of the Chicago Scene

Theater is part of the Chicago experience. Each year, over 200 theaters present thousands of shows to Chicago's loyal and enthusiastic theater-going audience. Chicago's theater community is recognized around the world for its talent, its innovation and its power to entertain and enlighten. If Tony awards were sports championships, our artists would beat out the combined efforts of Michael Jordan, Bobby Hull, Jim McMahon, Jermaine Dye, and the entire Chicago Cubs roster going back 100 years. This stage is a Chicago stage, contributing to the vibrant artistic life of our city and the economic development of our neighborhood. Very few cities on the planet offer the theatrical richness and diversity of Chicago. But you get to share in it. Because you are here.



*ANY TIME
ANY SHOW
AS OFTEN AS YOU LIKE*

.....

THEATER WITH MEMBERSHIP

\$35/month

.....

.....

FLEXPASS

10 tickets for \$275

.....

- See anything in the building at a dramatically reduced price.
- See 10 shows, go on 5 dates, or just bring your 9 closest friends with you to one show.
- After ordering, you get a card in the mail within a week with your Flexpass code which can be used online, over the phone or at the box office

See any play in our building, any time, as often as you like for one flat monthly fee.

Reserve a ticket for any production in our facility. Do it in advance or just drop by on impulse.

Free ticket exchanges and replacement tickets.

Attend as many different shows as you want each month. Come once, twice or five times a week at no additional charge.

No initiation or startup fee, but members must agree to a three-month minimum.

Twice a year, bring a friend for free.

THEATER WIT STAFF

YOU ARE HERE WITH US

BOARD OF DIRECTORS

KATHRYN STIEBER

President

CHARLES HORNEWER

Treasurer

NEAL SMYTH

Secretary

ROGER DANIEL

DAVID MAHVI

ROCHE SCHULFER

BRUCE WECHSLER

STAFF

JEREMY WECHSLER – Artistic

Director

DAVID WECHSLER – Company

Manager

JOSH NORDMARK – Box Office

Manager

ALEXA ULRICH – Front of House

Manager

MATTHEW CHASE – Facilities

Manager

HANNAH BLAU, REBECCA FLORES,

CORRINE GLANVILLE, ELIZABETH

HADDEN, ARIYA HAWKINS, SARAH

LUSE, JACKELYN NORMAND,

CHRISTIN PRINCE, – Front of House

Staff

E-NEWS

Stay up to date on all the happenings at Theater Wit. Sign up for our e-newsletter. Get the latest info on show openings and schedules; eavesdrop on production gossip and artistic plans; see behind-the-scenes photos.

- Get a free piece of chocolate when you fill out a mailing list insert and give to any bartender, usher or house manager.
- Sign up online at theaterwit.org/join
- Mailings twice per month. We don't deluge you with messages and we don't sell your name to other lists.

Facebook: facebook.com/theaterwit

DONATE

Theater Wit is a 501(c)(3) organization. Your tax-deductible donation supports Theater Wit and supports this building in its role as an artistic home for Chicago's best storefront theaters.

- Donate online at theaterwit.org/donate
- Make an instant donation at the box office, the bar, or with our house manager.
- Donate your time and talents! Theater Wit welcomes volunteers for office work, community outreach, building improvements and special events.